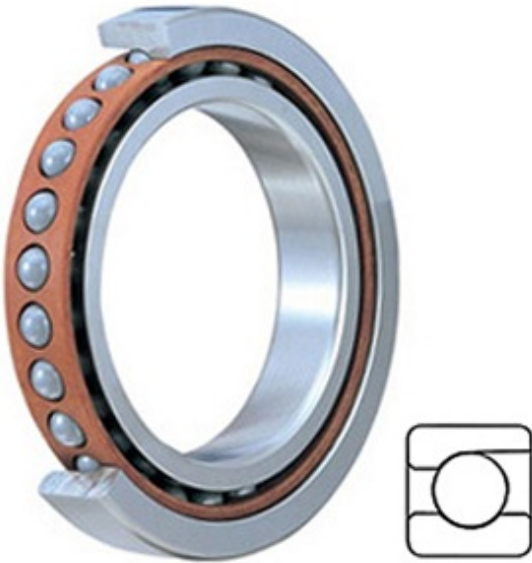




IPTCI Bearing Business LLC



2MM206WI Bearing 2D drawings and 3D CAD models

1.181 Inch | 30 Millimeter x 2.441 Inch | 62
 Millimeter x 0.63 Inch | 16 Millimeter TIMKEN
 2MM206WI Precision Ball Bearings

Bearing No. 2MM206WI

Category	Precision Ball Bearings
Inventory	0.0
Manufacturer Name	TIMKEN
Minimum Buy Quantity	N/A
Weight	0.204
EAN	0087796070196
Product Group	B04270
Enclosure	Open
Precision Class	ABEC 7 ISO P4
Material - Ball	Steel
Number of Bearings	1 (Single)
Contact Angle	15 Degree
Preload	None
Raceway Style	1 Rib Outer Ring
Cage Material	Phenolic
Rolling Element	Ball Bearing
Flush Ground	No
Inch - Metric	Metric
Other Features	Single Row Angular Contact Super High Precision
Long Description	30MM Bore; 62MM Outside Diameter; 16MM Width; Open Enclosure; ABEC 7 ISO P4 Precision; Steel Ball Material; 1 (Single) Bearings; 15 Degree



IPTCI Bearing Business LLC

	Contact Angle; Phenolic Cage Material; 1 Rib Outer Ring Rac
Category	Precision Ball Bearings
UNSPSC	31171531
Harmonized Tariff Code	8482.10.50.28
Noun	Bearing
Keyword String	Angular Contact Ball
Manufacturer URL	http://www.timken.com
Manufacturer Item Number	2MM206WI
Weight / LBS	0.45
B	0.63 Inch 16 Millimeter
d	1.181 Inch 30 Millimeter
D	2.441 Inch 62 Millimeter
d - Bore	30 mm
D - Outer Diameter	62 mm
Bearing Width	16 mm
do - Ball Diameter	9.525 mm
C0 - Static Radial Rating	14700 N
Ce - Dynamic Radial Rating ¹	25500 N
Limiting Speed (Grease)	25100 rpm
Limiting Speed (Oil)	50200 rpm
Ball Type	STEEL
Cage Type	CR - Phenolic Outer Land Riding Cage
Bearing Weight	0.195 Kg
Design Units	METRIC
Full Timken Part Number	2MM206WICR
R - Inner Ring To Clear Radius ²	1.0 mm
r - Outer Ring To Clear Radius ³	1.0 mm
da - Inner Ring Backing	36.500 mm



IPTCI Bearing Business LLC

Diameter	
Da - Outer Ring Backing Diameter	56.0 mm